

INDOOR AREA  
90sqm

COVERED VERANDA  
22sqm

2 BEDROOMS APARTMENT  
2 BATHROOMS  
1 GUEST TOILET

## TECHNICAL SPECIFICATIONS

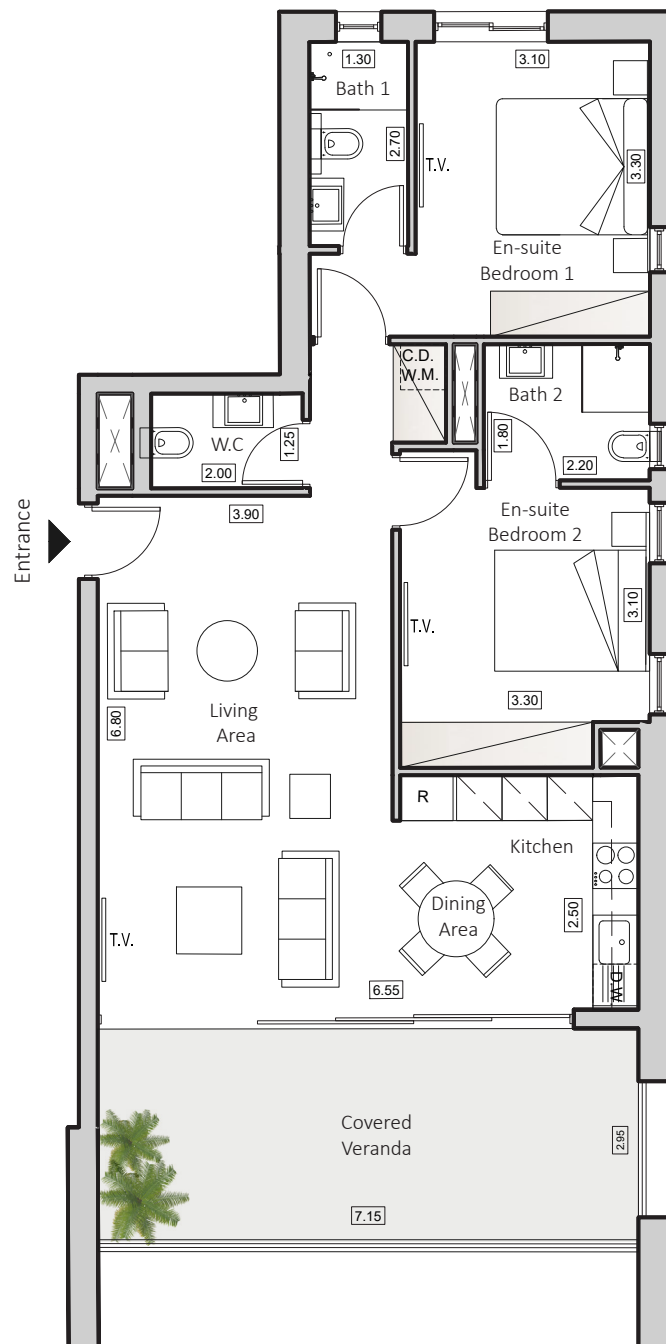
- A Luxurious Lobby
- Huge Swimming pool
- Open kids playground, gym, padel court
- Energy Certification A+
- Landscape design for the shared spaces
- Separate storage room for each apartment
- Private parking for each unit

## UNIT

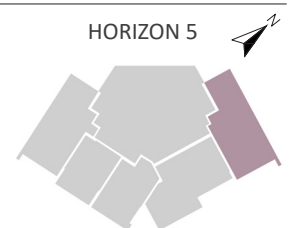
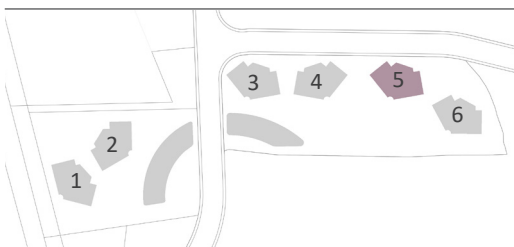
- Double & thermal glazing windows
- Mosquito nets in all aluminum profiles
- Three-phase electrical supply
- Flooring with the high quality ceramic (80x80mm) or (100x100mm) or (120x60mm)

## SMART HOME SYSTEM

| FLOOR | FLAT |
|-------|------|
| 9     | 905  |
| 11    | 1105 |
| 12    | 1205 |



Floorplan Location



Disclaimer: It is clarified that the simulations, the apartment plans and the technical specifications in this brochure are for illustrative purposes only and do not constitute any binding representation on the part of the company. It is clarified that the actual structure may be different from what is shown in the simulations and plans. The company will be bound by the sales contract, the specifications and plans signed by the company and the buyers. The furniture shown in the simulations and plans is for illustration only and is not part of the apartment specifications. Do not refer to its dimensions or shape, but only to what appears in the technical specifications signed by the buyer for the purpose of ordering permanent furniture integrated in the rooms. Do not rely on the measurements indicated in this plan, but on the actual measurements. This plan was prepared before receiving the building permit, the company will only be bound by the sales plans that they signed in the contract.